

BIO-CONNECTION

BRIDGING

t h e **CMC** *g a p*

DEVELOPMENT FILL & FINISH FREEZE-DRYING

Alexander Willemse
CEO BioConnection
Chief Executive Optimist



Is het een sprookje?



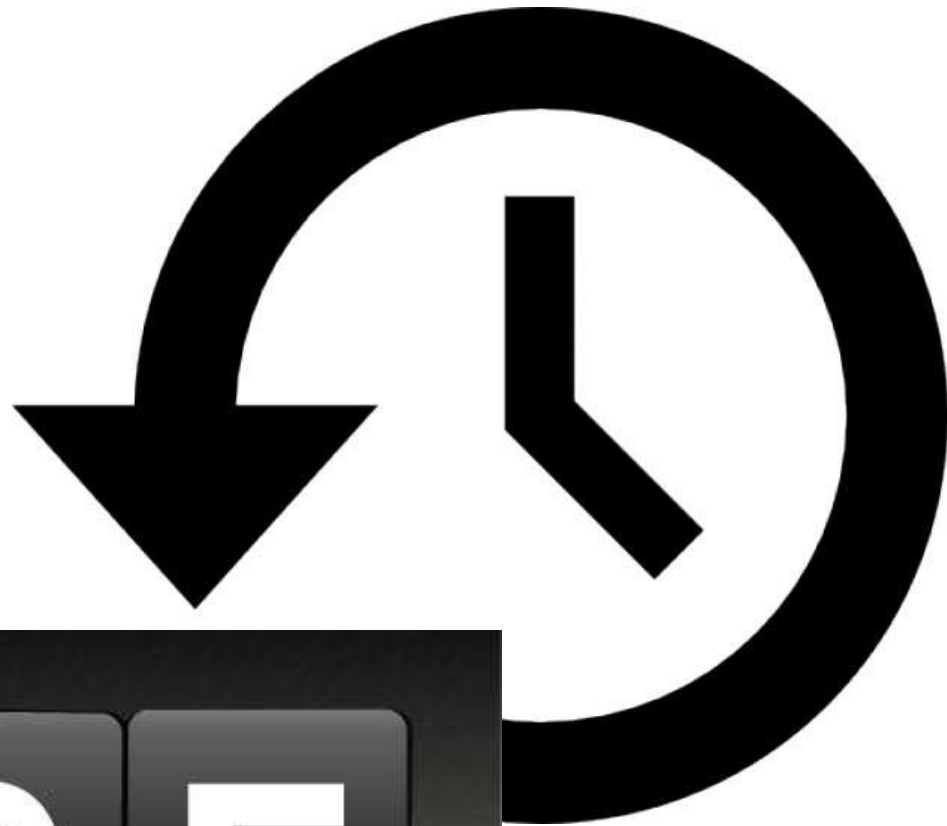
Een spannend jongensboek?



Of gewoon het zoveelste saaie ondernemersverhaal?



BACK
in time



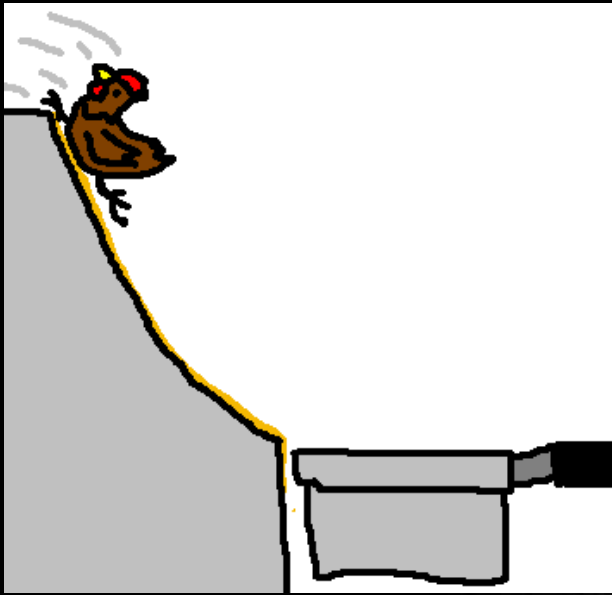
2005

BioConnection

*Fulfilling needs
in biopharmaceutical development & manufacturing*







2008



BIO-CONNECTION

2008



Rekeningen op krediet
Geen aflossing

Brabantse Ontwikkelings Maatschappij

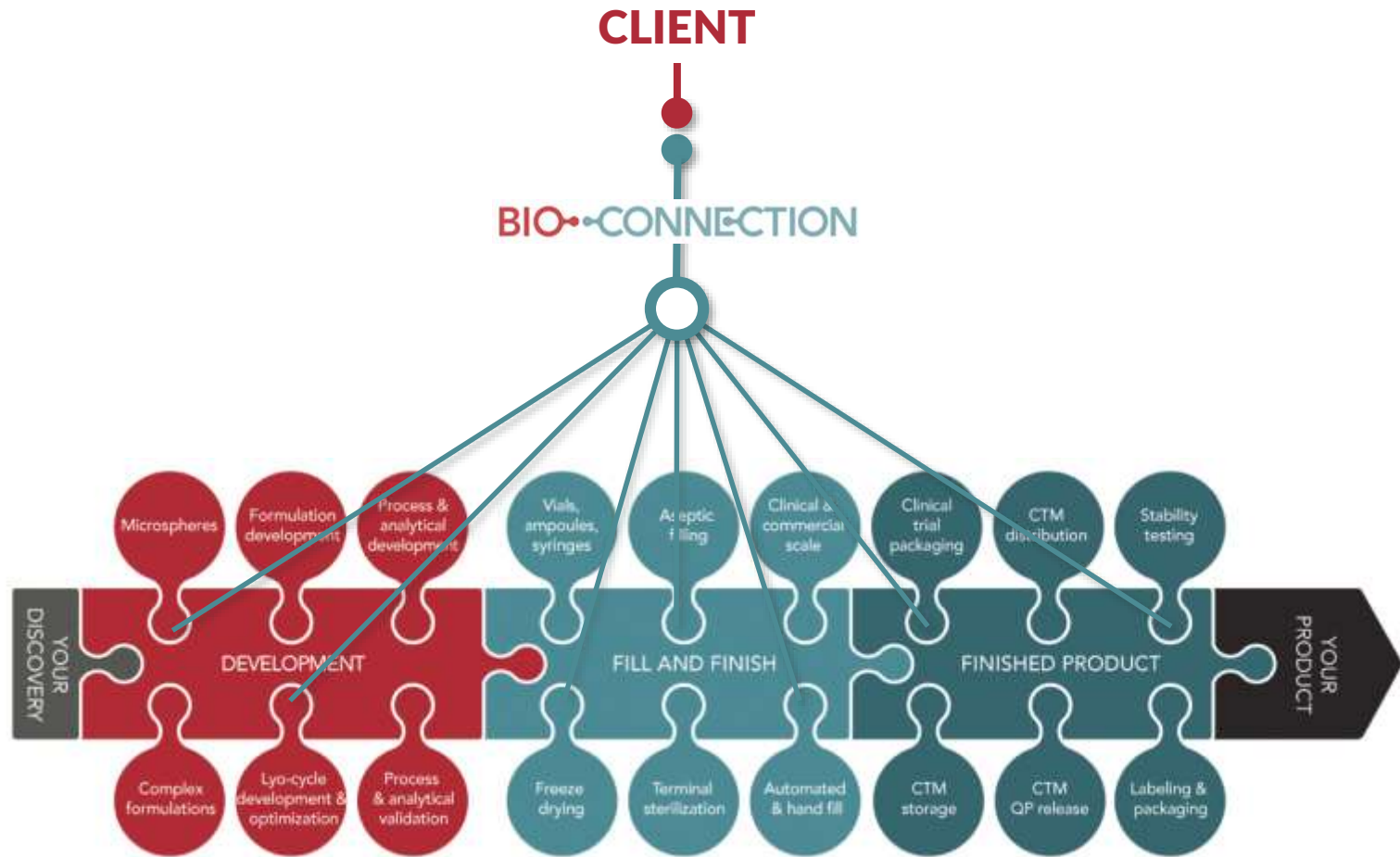


Geen aflossing





OUR BUILDING BLOCKS



BIO-CONNECTION

One Contact – One Contract

Een stukje geschiedenis

BioConnection
*Fulfilling needs
in biopharmaceutical development & manufacturing*

BIO-CONNECTION
FULFILLING NEEDS IN BIOPHARMACEUTICAL DEVELOPMENT & MANUFACTURING

10 YEARS 2005 | 2015
BIO-CONNECTION
FULFILLING NEEDS IN BIOPHARMACEUTICAL DEVELOPMENT & MANUFACTURING

2005



2015



When one
door closes

Two simple black icons of doors. The first is a closed door, and the second is an open door swinging to the right.

another opens.

2011



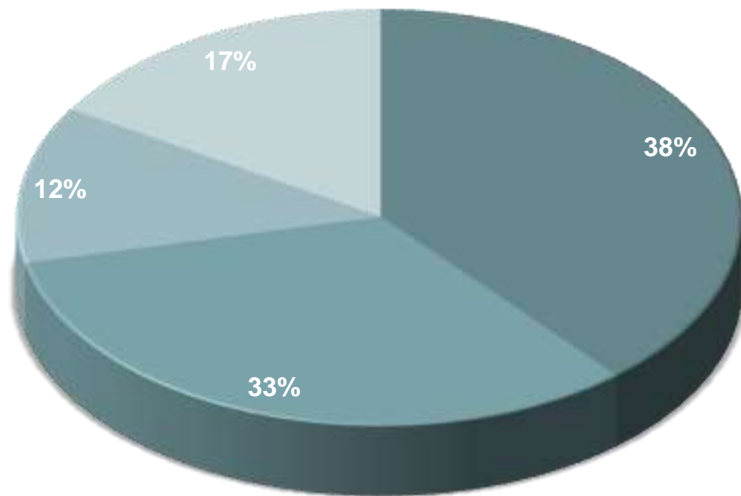
SERVING CLIENTS WORLDWIDE

Since 2005



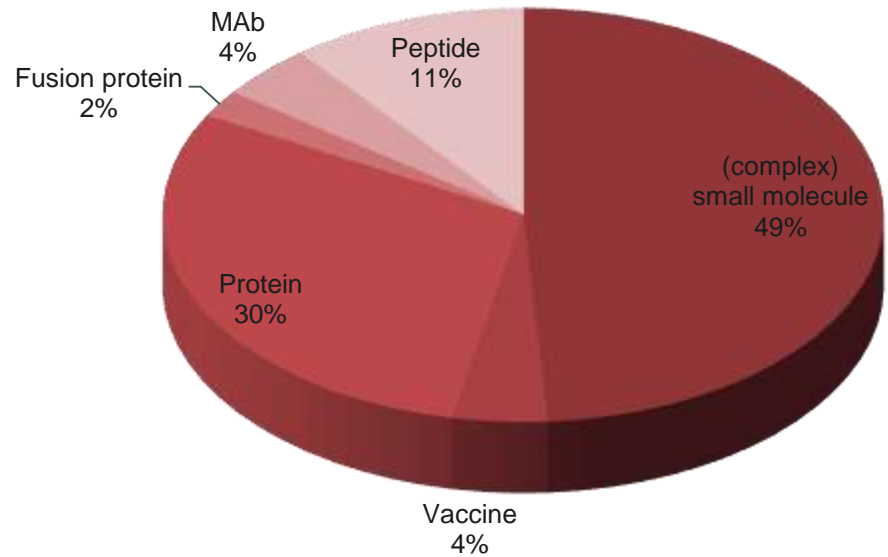
PROJECT DISTRIBUTION

Markets



■ EU ■ NL ■ US ■ ROW

API type



In één keer duidelijkheid bij prostaatkanker

Nieuwe MRI-technieken: snel, nauwkeurig en minder belastend



PROSTATE MR
CENTER OF EXCELLENCE

BioConnection, ChemConnection, and Proxy announce successful release of the first 'Combidex' batch for the Radboudumc, Nijmegen, the Netherlands

Pivot Park, Oss, The Netherlands, February 18, 2014

BioConnection, ChemConnection and PROXY are honored to announce the successful release of the first batch of Combidex, a revolutionary product from the Radboudumc Department of Radiology and Nuclear Medicine initiated by Professor Jelle Barentsz. This achievement was made under the lead and management of BioConnection. ChemConnection manufactured the API batch and PROXY, a wholly owned subsidiary of Sinensis LifeSciences, performed the formulation and product release.

The product is an important step forward in lymph node imaging enabling better cancer treatment. The cooperation shows the innovative power of the Dutch life sciences industry and University and combines state of the art chemistry, analytics and GMP manufacturing of high-tech nano-suspensions.

Professor Jelle Barentsz of the Radboudumc: "It was a great experience working with these high-tech Dutch companies. They were able to meet tight timelines and developed and manufactured this high-tech product beyond expectation. They succeeded where others failed. This product will open better ways for diagnostics of prostate- and other cancer. The cooperation of the three companies was unique, last but not least a result of the management by BioConnection, and the final result is fantastic".

Dr. Alexander Willemsse, CEO of BioConnection, also on behalf of Dr. Gerjan Kemperman, CEO of ChemConnection, and Dr. Ruud Santing, CEO of Sinensis LifeSciences: "The enthusiasm of Professor Jelle Barentsz pushed us forward. He was a good source of inspiration. The chemistry and analytics of this product are highly complex but by joining forces we were able to successfully develop and manufacture this product. It was a challenge for chemistry, analytics and fill & finish. We are very proud that we were able to release our first batch for human use and contribute to this breakthrough in cancer therapy".

BioConnection (www.BioConnection.eu) is a Dutch contract services and manufacturing organization for the development and production of injectable (bio)pharmaceutical products. We have access to various GMP manufacturing facilities across Europe that are all in compliance with the guidelines issued by EMA and/or the US-FDA. The cornerstones of our CMC services are: Drug Product development (formulation, analytics, freeze-dry cycle), fill & finish and freeze-drying at clinical and commercial scale. We are currently expanding our capabilities with the development and GMP manufacturing of complex formulations such as microspheres, liposomes and nanoparticles.

We have the means and expertise to bring your invention from the lab bench to the clinic and/or to the market. Due to our unique setup and best-in-class European network of development and manufacturing partners we are able to provide you with tailor made solutions with unmatched flexibility. Our approach ensures a seamless development and manufacturing chain for your product.

If you want to experience what BioConnection can offer for your development or manufacturing project, please contact us.

Contact for BioConnection:

Sjaak Stevense MD
Director Business Development
Tel. +31-412637937
Sjaak.Stevense@BioConnection.eu

for Radboud University:

Prof. Dr. J. Barentsz
Department of Radiology
Radboud University Nijmegen Medical Centre
J.Barentsz@rad.umcn.nl



fd.
Gazellen
Awards
2016

HEBBES!



2015





pivotal
park
Life Sciences Community One

voor
BIO-CONNECTION



2016



CAPABILITIES



Batch size liquid product:

- 2 – 50 L (200L in flexbags)

Freeze-Drier:

- Shelf surface 1 x 3 m²

Fill volumes vials:

- 0.5 ml – 50 ml

Fill volumes syringes:

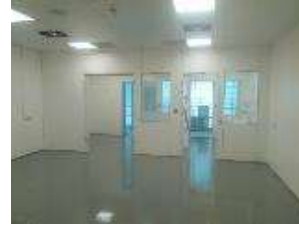
- 0.5 ml – 10 ml
- Luer lock, stack-needles etc
- Batch size: 5,000 syringes per hour

FDA and EMA approved

Terminal sterilization

Manual fill

Available sizes	Liquid product in vials	Lyophilized product
2 R DIN	12,500	11,000
6 R DIN	10,000	5,700
10 R DIN	10,000	4,800
20 R DIN	6,000	3,000
25 R DIN	6,000	3,000
50 ml	6,000	1,400



2005-2017 Aandeelhouders

BOM, Mibiton

- Betrouwbaar
- Loyaal
- Lange termijn visie
 - Werkgelegenheid
 - R&D



BIO-CONNECTION
FULFILLING NEEDS IN BIOPHARMACEUTICAL DEVELOPMENT & MANUFACTURING

EXTENSIONS

D-class process development room with state-of-the-art TFF equipment



Opened 2017

2018, 3 jaar vooruit

Laten we proberen 3 jaar vooruit te kijken.
Forward looking statement:
geen garanties, onderhevig aan verandering
etcetera....

1^e verdieping

- Procesontwikkelingsruimte ✓
- Laboratorium ✓
- Nakijk ✓
- Label&Pack

3^e verdieping

- Huidige 50L lijn met vriesdrogen ✓
- 2^e vullijn (200-300 liter, 2 compounding areas, FD)
 - Investering €10-12 mio

5^e verdieping

- Flexibele GMP ruimtes
 - Investering € 800k
- BSL-2 capability, Immunotherapie
- Samenwerking met Emultech, microsferen ✓
- Verhuur



**WIE
MET BEIDE BENEN
OP DE GROND
BLIJFT STAAN**

KOMT NIET VER

Loesje

Postbus 1005 6801 GA Arnhem

www.loesje.nl

Is het een sprookje?



Een spannend jongensboek?



Of gewoon het zoveelste saaie ondernemersverhaal?



Vragen?

